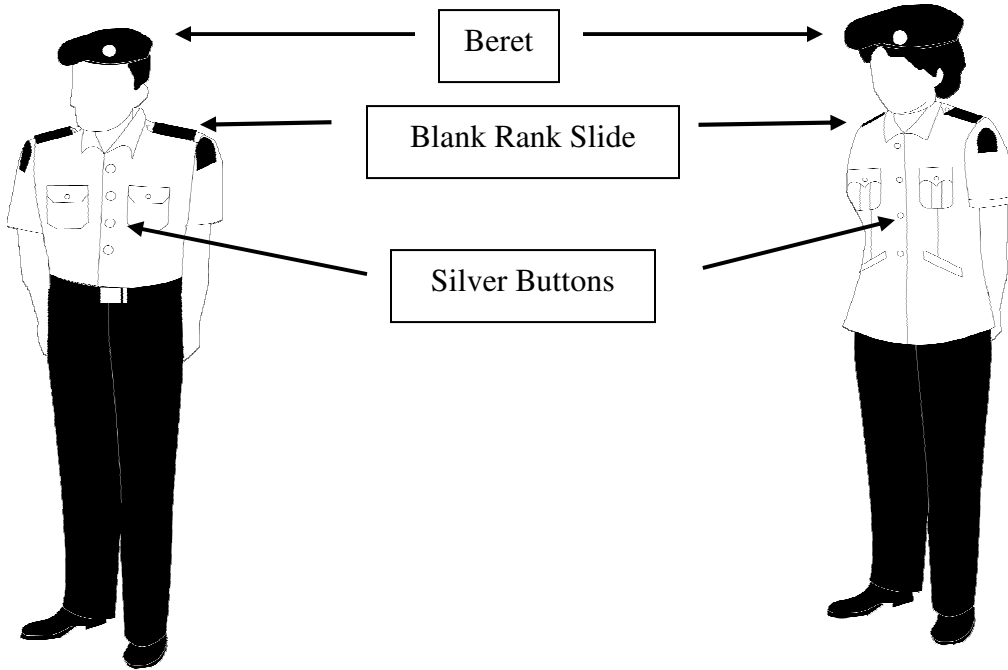


**SJAM New Uniform Guidelines (adapted from the National Circular, dated 1/12/2007)**

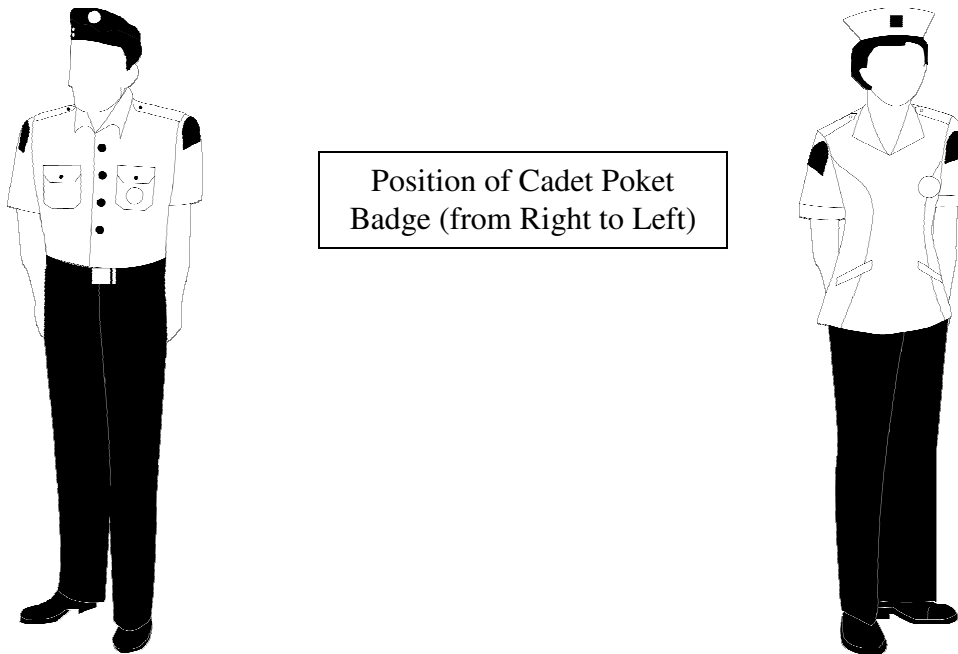
**Ambulance Adult Members**

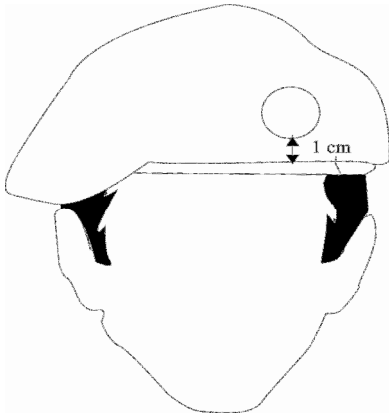
**Nursing Adult Members**



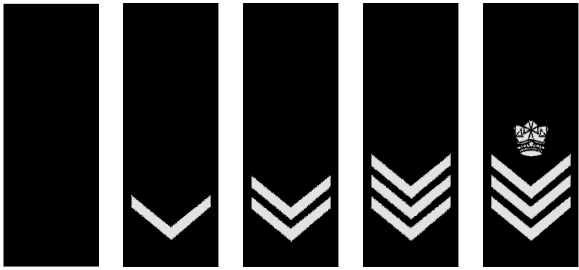
**Ambulance Cadet Members**

**Nursing Cadet Members**

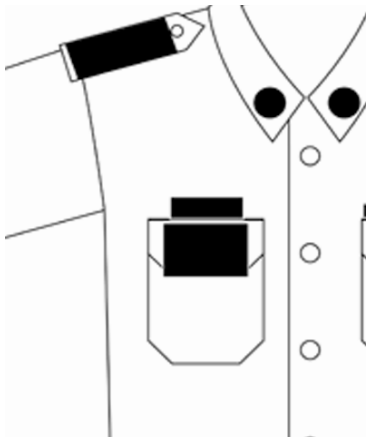




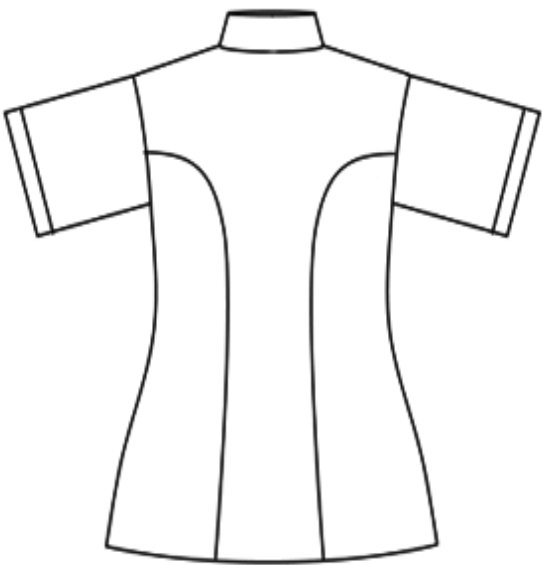
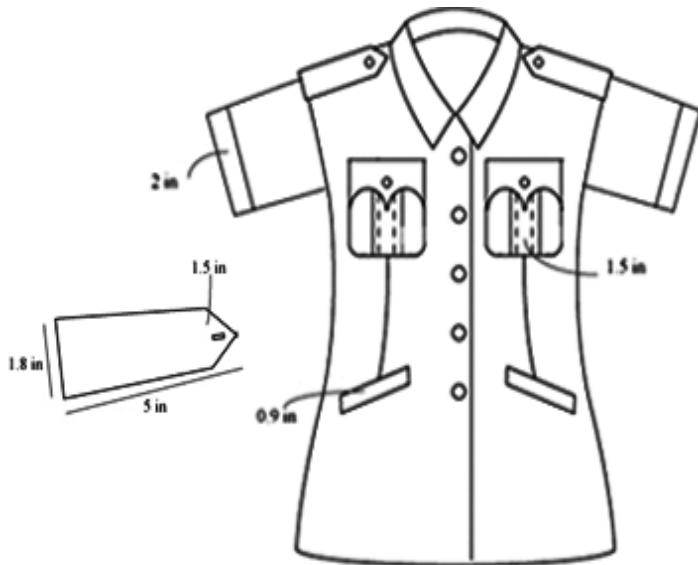
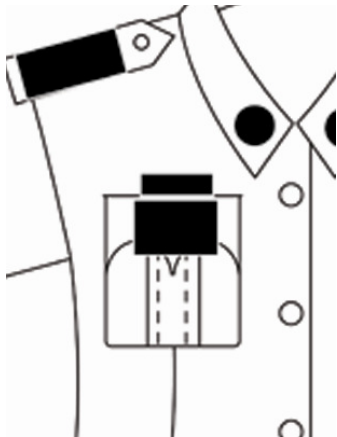
Wearing of Beret with the new cap badge



Rank Slides for Ambulance & Nursing Adult Members



Name Tag and ID Holder to be worn on the Right



Blouse for Nursing Adult Members